



„All inclusive“

The **CONVERS CONMIC** is the best of both worlds, video and audio. An elegant **integrated monitor solution** in combination with two retractable, synchronous **gooseneck microphones**.

The **8mm slim 17.3-inch full HD** monitor and two gooseneck microphones move virtually silently in a compact aluminum housing. **Whisperquiet** and discreet, at the touch of a button or by remote control. The inclination of the monitor can also be individually adjusted at the touch of a button - up to an impressive 30°.

A typical ELEMENT ONE solution: **Uniquely designed** and yet perfect for the needs of interior design, with discreet and compact integration into the table and the room.

The electronic and mechanical components are state-of-the-art. The whole unit offers incomparable durability and extremely **low power consumption**.

Unique.
Made in Germany.
Made by ELEMENT ONE.

CONVERS DUAL CONMIC



- Most compact housing dimensions
- Ultra-thin 8 mm BLADE monitor housing
- 2 mm anti-reflective protective screen
- Precise motion of gooseneck microphones
- Brushed stainless steel for holding frame and closing flap
- Monitor housing made of silver anodised aluminium
- Passive monitor cooling without ventilation openings
- DirectAxleAccess for manual extension and retraction - ideal for service and maintenance purposes
- HDMI HDCP compatible; FullHD resolution
- A total of four precise stepper motors 12V, for monitor and microphones.
- Low power consumption, typ. 15W
- Electronic clamping protection
- German precision mechanics
- Electronic & acoustic diagnosis and feedback system
- Durable HighFlex cables
- Integrated universal mounting rails for variable mounting Aluminium housing
- Sophisticated cable & connector placement
- Mechanical protection in case of faulty operation
- EMC + EMC protected
- HydraulicSaveSystem against mechanical malfunction
- 5 years limited warranty



Features

CONVERS DUAL CONMIC



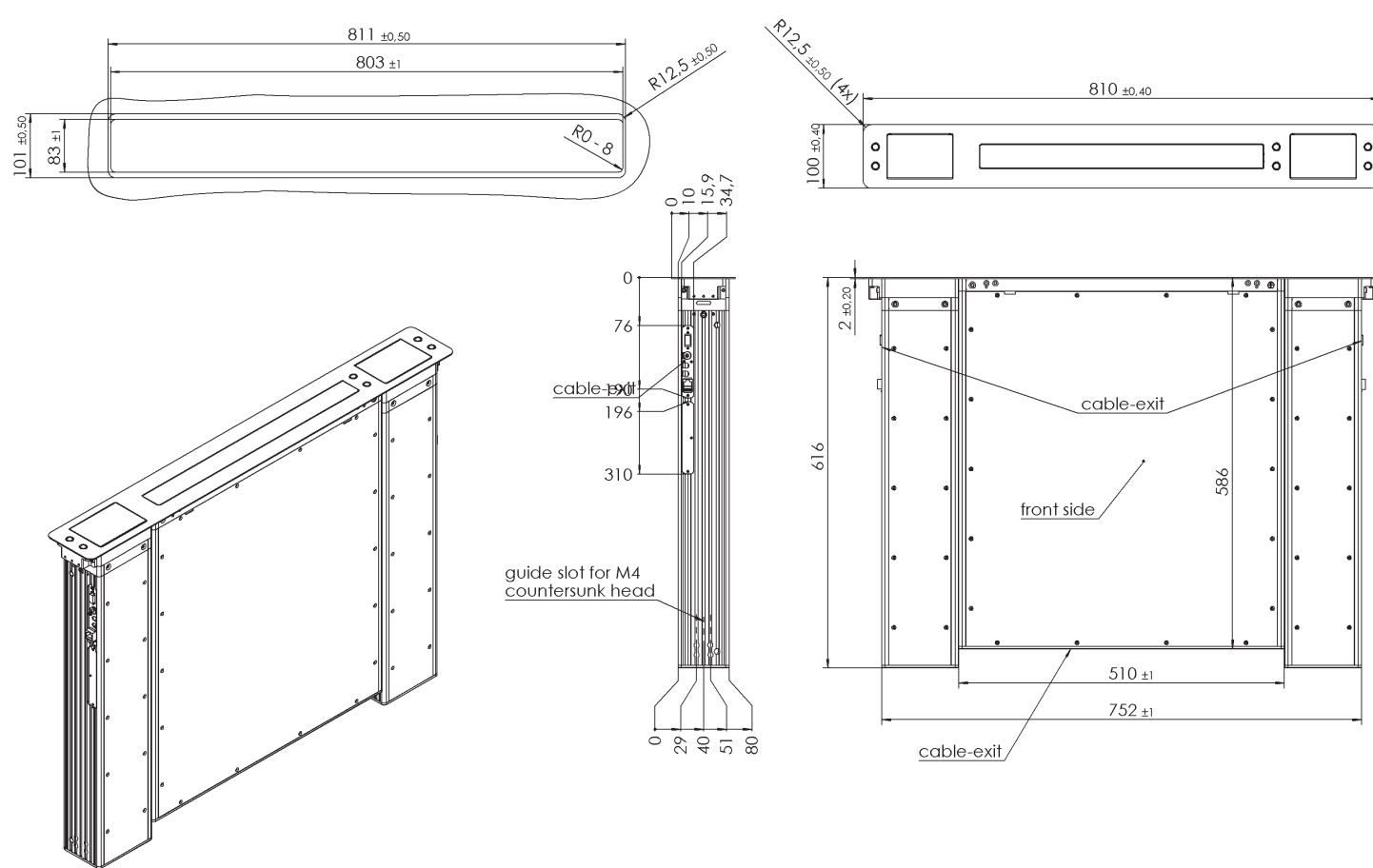
TECHNICAL DATA

Product Specification



Art.No.	245-173-T IP BLADE	Screen size:	17.3" (16:9)
Type	CONVERS DUAL CONMIC 173 BLADE TILT	Resolution:	1920 x 1080 - Full HD, 262,144 colors
Function	Vertically retractable monitor with 30° monitor angle adjustment; 17.3" monitor system can be integrated into furniture; independent electromechanical drive / lifting system of the integrated 8mm slim display and gooseneck microphones arranged to the right and left. Control via buttons on the device or remote control interfaces (TCP/IP or dry contact) ; Manual extension function DirectAxleAccess for service, maintenance, installation purposes. Independent electromotive adjustment of the monitor angle; individual adjustment / programming by individual user.	Brightness:	300 cd/m2
Material	Monitor: Milled aluminium, anodized, 2 mm anti-reflective protective glass Mechanics: Anodised aluminium, stainless steel; holding frame and flap stainless steel, brushed	Contrast ratio:	(typ.) 700:1
		Viewing angle:	Horizontal 160 ° / vertical 160°
		LED lifetime:	up to 15,000 hours
		Mass:	24,5 kg
		Dimensions:	810 x 100 x 586 mm (LxWxD)
		Microphones:	prepared for 2x gooseneck (not included)
		Power consumption:	typ. 15 Watt
		Power Cons. Monitor:	OFF: 0.12 Watt, Sleep: 0.60 Watt, ON: 19 Watt
		Inclination angle:	up to 30°
		4x stepper motors:	Extension monitor, microphones & monitor inclination
		Video interface:	HDMI, Display port *, DVI **
		Remote control interf.:	9-pin d-sub serial + RJ45 TCP/IP
		Scope of supply:	Table power supply - Input: 100-240V AC, 50 / 60Hz. 1.5A; Output: 12V 60W MAX 5.A (Cable length DC ~ 140cm) AC cable 1.5m

* optional, additional interface | ** optional, instead of HDMI



Dimensions



We'd be delighted to offer our expertise in the planning and selection of the right solution for your needs. If required, we can send further technical drawings, detailed photographs, material samples and, of course, demo devices – perfect to handle and try out.

Simply call us on +49 (0)7222 96654-20

Or send us an e-mail at: info@element-one.de

ELEMENT ONE

Multimedia GmbH

Zum Murgdamm 5

76456 Kuppenheim

Germany

Fon: +49 (0) 7222 966 54 20

Mail: info@element-one.de

www.element-one.de